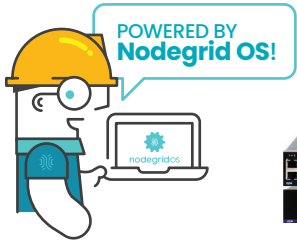


Nodegrid Services Routers Comparison Chart

ZPESYSTEMS.COM +1.844.4ZPESYS

ZPE Systems, Inc. All rights reserved. All trademarks are the property of their respective owners.



FEATURES	NODEGRID NET SR	NODEGRID GATE SR	NODEGRID BOLD SR	NODEGRID HIVE SR	NODEGRID LINK SR
CPU	4, 8, 16 Core - Intel x86_64	4, 8 Core - Intel x86_64	2, 4 Core - Intel x86_64	4 Core - Intel x86_64	2 Core - Intel x86_64
Memory	8, 16, 32, 64GB DDR4 DRAM	8, 16, 32, 64GB DDR4 DRAM	4, 8GB DDR3 DRAM	16GB DDR4 DRAM	4 or 8GB DDR3 DRAM
Storage	32GB Hardware Encrypted SSD *Optional 2nd Storage	32GB Hardware Encrypted SSD *Optional 2nd Storage	32GB Hardware Encrypted SSD *Optional 2nd Storage	16GB Hardware Encrypted SSD *Optional 2nd Storage	16GB Hardware Encrypted SSD *Optional 2nd Storage
Guest VM	1-2	1-2	1	1-3	1
Docker Apps	1-4	1-3	1-2	1-4	1-2
PoE+	8-24 PoE+ Output	4 PoE+ Output	-	-	PoE+ Input
5G Dual SIM Slots	2 concurrent 5G modems with 4 SIM slots	2 concurrent 5G modems with 4 SIM slots	Coming Soon	2 concurrent 5G modems with 4 SIM slots	Coming Soon
4G/LTE Dual SIM Slots	10 concurrent 4G/LTE modems with 20 SIM slots	2 concurrent 4G/LTE modems with 4 SIM slots	2 concurrent 4G/LTE modems with 4 SIM slots	2 concurrent 4G/LTE modems with 4 SIM slots	One (1) 4G/LTE with 2 SIM slots
Wi-Fi	Wi-Fi 5	Wi-Fi 5	Wi-Fi 5	Wi-Fi 5	Wi-Fi 5
GPIO	-	2 DIO, 2 Out, 1 Relay	-	-	2 DIO, 2 Out
Power	Single or Redundant	Single or Redundant	Single or Y-Cable	Single or Y-Cable	Single or Y-Cable
Mode	OoB & Gateway	OoB & Gateway	OoB & Gateway	OoB & Gateway	OoB & Gateway
Console	RJ45 Serial	RJ45 Serial	RJ45 Serial	RJ45 Serial & Mini-USB	RJ45 Serial
Cloud Support	Yes	Yes	Yes	Yes	Yes

Nodegrid Services Routers Comparison Chart

ZPESYSTEMS.COM +1.844.4ZPESYS

ZPE Systems, Inc. All rights reserved. All trademarks are the property of their respective owners.



FEATURES	NODEGRID NET SR	NODEGRID GATE SR	NODEGRID BOLD SR	NODEGRID HIVE SR	NODEGRID LINK SR
Ethernet	4 Built-In Eth. Expandable to 84 Eth. Ports with Expansion Cards 2X GbE 2X SFP+ (10G) *Additional expansion cards available	Total of 11 Eth. Ports 1X GbE 4X GbE + Switch 4X PoE+ + Switch 2X SFP+ (10G)	Total of 5 Eth. Ports 1X GbE 4X GbE + Switch	Total of 8 Eth. Ports WAN: Copper, Fiber, & Wireless • 2X GbE on shared RJ45 or SFP/vDSL transceivers • 2X 10 Gbps cages for PON or SFP+ transceivers • 4X 10/100/1000/2.5 Gbps RJ45 with VLAN support	Total of 2 Eth. Ports 1X SFP (1G) 1X GbE + PoE Input
RS-232 Serial for OOB Device Control	16–80 RJ45 Serial Ports @ 230,400 Baud Plus External USB connected Serial Expansion Ports	8 via USB RJ45 Serial Ports @ 230,400 Baud Plus External USB connected Serial Expansion Ports	8X RJ45 Serial Ports @ 230,400 Baud Plus External USB connected Serial Expansion Ports	2–4 via USB RJ45 Serial Ports @ 230,400 Baud	1X RJ45 Serial Ports @ 230,400 Baud Plus External USB connected Serial Expansion Ports
SFP Modules	SFP Fiber, Copper, vDSL2	SFP Fiber, Copper, vDSL2	Copper, vDSL2	SFP Fiber, Copper, vDSL2	SFP Fiber, Copper, vDSL2
USB	1X USB 3.0 Host on Type A 2X USB 2.0 Hosts on Type A *Additional expansion cards available	2X USB 3.0 Hosts on Type A 2X USB 2.0 Hosts on Type A	2X USB 3.0 Hosts on Type A 2X USB 2.0 Hosts on Type A	2X USB 3.0 Hosts on Type A	2X USB 2.0 Hosts on Type A
Size	438 X 332 X 43 mm (17.2 X 13.1 X 1.7 in)	241.3 X 260.35 X 44.45 mm (9.5 X 10.25 X 1.75 in)	142 X 201 X 44 mm (5.5 X 7.9 X 1.73 in)	200 X 256 X 44.00 mm (7.87 X 10.08 X 1.73 in)	170 X 130 X 55 mm (6.69 X 5.11 X 2.16 in)
Weight	Bare Config Chassis: 4.9 kg (10.8 lb)	0.9 kg (2 lb)	1.2 kg (2.6 lb)	1.3 kg (2.8 lb)	1.04 kg (2.3 lb)
Mounting Options	Rack	Rack	Wall, Rack	Wall, Rack	Wall, Rack, DIN Rail
Operation Temp.	0–45°C (32–113°F), 5–95% RH, non-cond.	0–60°C (32–40°F), 20–90% RH, non-cond.	0–60°C (32–140°F), 20–90% RH, non-cond.	0–40°C (+32–104°F), 5–95% RH, non-cond.	–20–60°C (–4–140°F), 5–95% RH, non-cond.
Storage Temp.	–20–67°C (–4–153°F), 10–90% RH, non-cond.	–20–67°C (–4–153°F), 10–90% RH, non-cond.	–20–67°C (–4–153°F), 10–90% RH, non-cond.	–40–70°C (–40–158°F), 5–95% RH, non-cond.	–20–67°C (–4–153°F), 10–90% RH, non-cond.

[VISIT PRODUCT PAGE](#)
 [VISIT PRODUCT PAGE](#)
 [VISIT PRODUCT PAGE](#)
 [VISIT PRODUCT PAGE](#)
 [VISIT PRODUCT PAGE](#)